

RECEIVED

DEC 22 2010

James V. Johnson

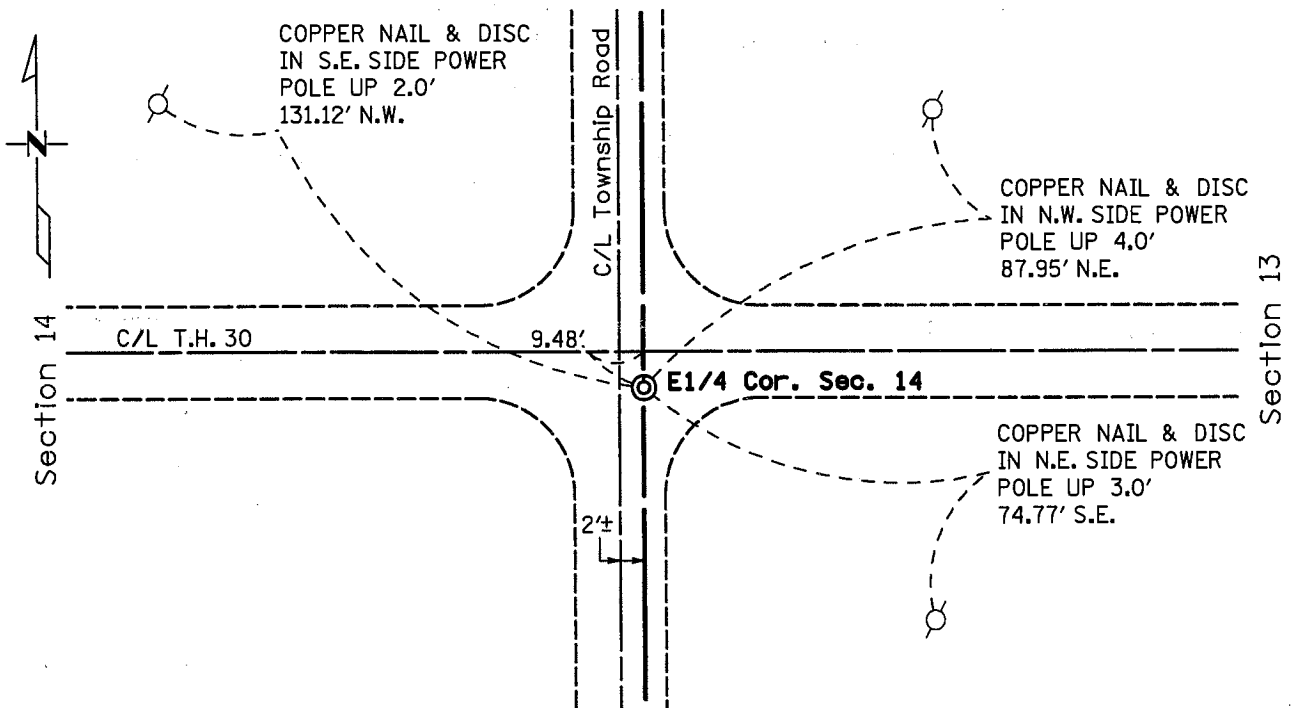
CERTIFICATE OF LOCATION OF GOVERNMENT CORNER

EAST QUARTER Corner of Section 14, Township 107, Range 41

5th Principal Meridian, State of Minnesota, County of MURRAY

At the corner location shown on the sketch:

- On Dec. 20, 2010 found an Minnesota Dept. of Transportation Cast Iron Monument
DATE
- left monument as found lowered monument removed monument (explain)
- On _____ placed a _____
DATE



Statement of evidence for this corner location is on back of this page.

I hereby certify that this document was researched and prepared by me or under my direct supervision.

Signature Matthew Schlager Date 12-20-2010 License No. 24640

Title: Land Surveyor Professional Engineer County Surveyor County Engineer

Certificate of Location of Government Corner

East Quarter Corner, Section 14, Township 107 North, Range 41 West

- 1861 The original Public Land Survey was done by L. G. M. Fletcher. A wood post was set over a charred stake in a mound of dirt and trenches and pits were dug to mark the corner.
- 1928 Notes in the Murray County Highway Engineer's office show that a stone was found marking the corner and an 8 inch by 8 inch by 16 inch stone was placed on top of the found stone.
- 1952 Survey notes from the Minnesota Highway Department survey indicate that nothing was found marking the corner. Note on the page says "Extensive digging done at this spot without results". The location was assumed at the intersection of centerlines of roads north, south, east, and west. The assumed position was 8.85 feet south of engineer's station P.O.T. 60+76.1. This same position is shown on the right of way map.
- 1981 MnDOT tie sheet states that it was decided not to excavate for this corner because the highway plans from the 1952 era indicate that the road was subcut through this area to a depth of about 4.5 feet below the surface of the road that was in place. Therefore; the stone monuments that were in place in 1928 were probably destroyed.
The quarter corner was re-established at the lost location, midway and on line between section corners. The lost location is 9.48 feet south of T. H. 30 engineer's station P.O.T. 60+78.37. This position is 2.35 feet southeasterly of the position assumed in 1952. It is about 2.35 feet east of the centerline of township roads north and south.
A cast iron monument was set so that the top was nearly flush with the surface of the road at the lost location.
- July 2009 A Mn/DOT survey crew, (crew chief Jeff Balbach) found the Minnesota Department of Transportation Cast Iron Monument set by MnDOT in 1981. The chain ties were also updated.
- December 2010 A Mn/DOT survey crew, (crew chief Jeff Balbach) found the Minnesota Department of Transportation Cast Iron Monument. The chain ties were also updated. The cast iron is accepted as the location of the section corner because no other evidence of the location of the corner could be found.

For further information regarding this corner, contact the Land Management section in Willmar, Minnesota 56201